



Empowering Finland to Achieve More

Eoin Doherty, VP Cloud Operations + Innovation, EMEA
Patrik Öhlund, Director Energy, EMEA
Mervi Airaksinen, Managing Director, Microsoft Oy
Heidi Nystedt, Government Affairs, Microsoft Oy



Agenda

- The New AI Economy / Eoin
- Microsoft invests in Finland / Mervi
- FDI learnings and asks / Patrik
- Summary / Heidi

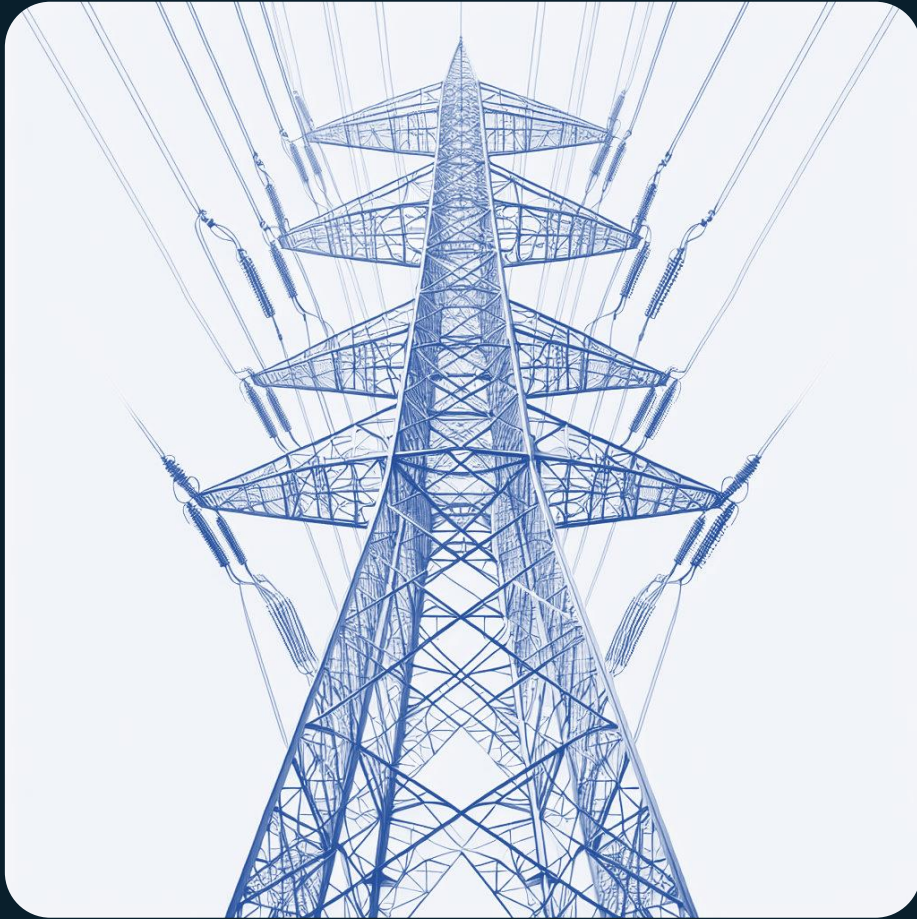


The New AI Economy



"Going forward, digital technology will be the key input that powers the world's economic output."

SATYA NADELLA
MICROSOFT CEO



General purpose technology



Single purpose tools

The AI Economy Tech Stack

Chips



Datacenters



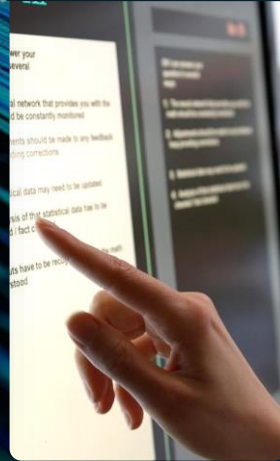
Cloud and data



Foundation models



Tooling



Applications



Distribution



Users



Electrical power + connectivity

Datacenters host the Microsoft cloud

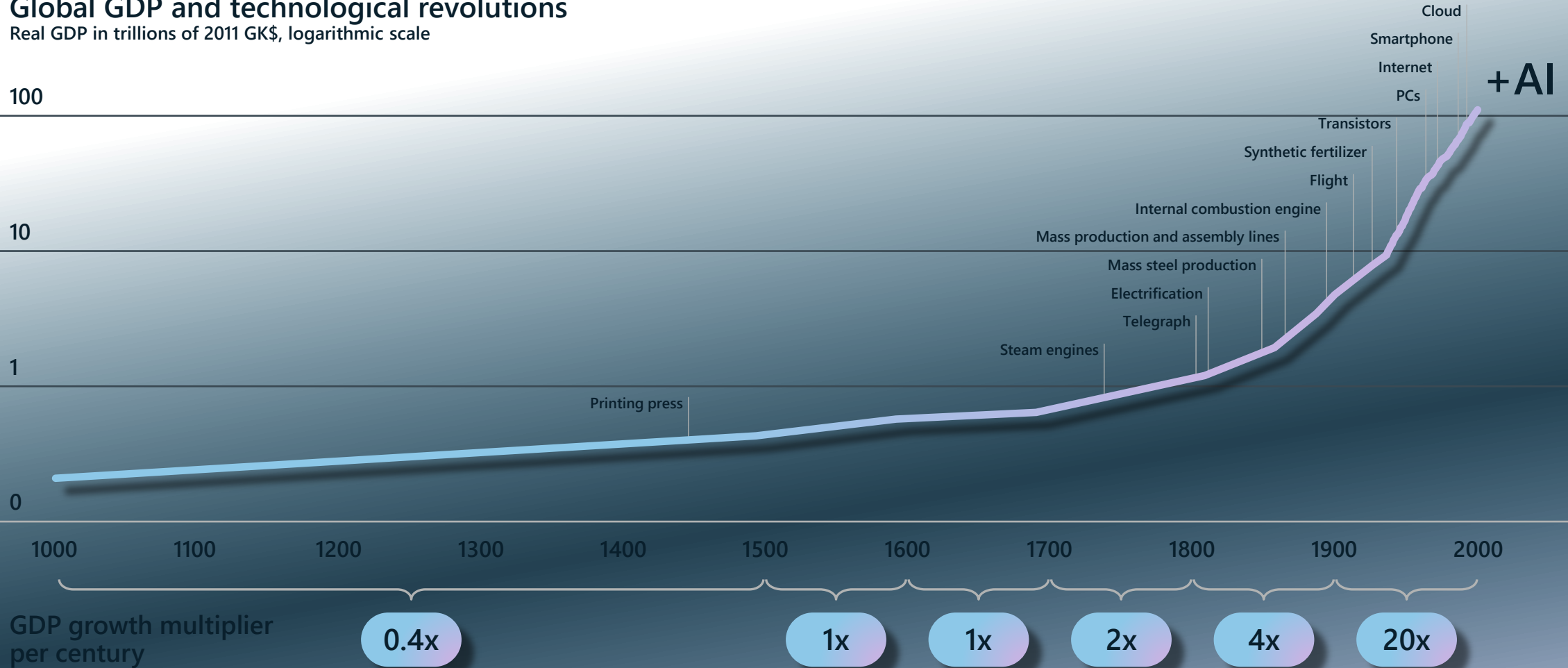
Microsoft global datacenters house an interconnected network of millions of computers that work together to store and manage data, run applications, and deliver content and services.



Technology & Growth

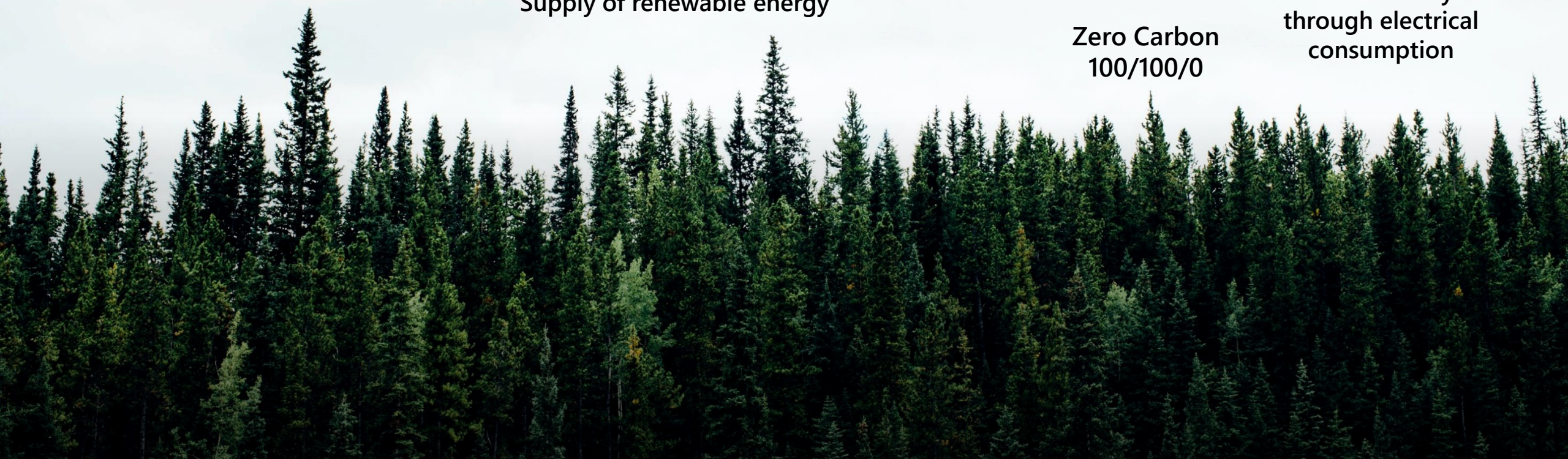
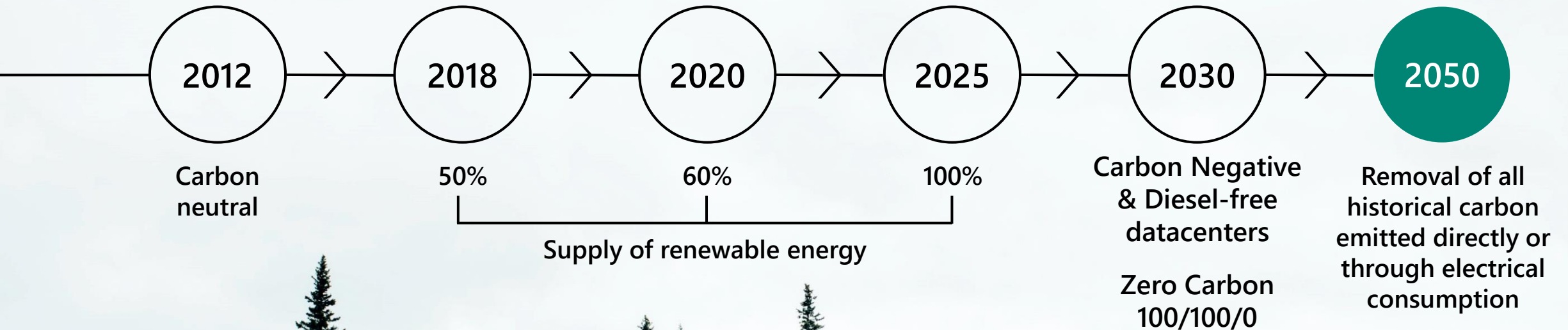
Global GDP and technological revolutions

Real GDP in trillions of 2011 GK\$, logarithmic scale



Source: Maddison Project, Ourworldindata

At Microsoft, we are committed to sustainability





Microsoft invests in Finland

Suomen suurin rakennusyhtiö kokeili tekoälyä ja näki tulokset – nyt käyttö laajenee

Suvi Korhonen 4.11.2024 14:08 | päivitetty 9.12.2024 16:57 [TEKOÄLY YRITYSJÄRJESTELMÄT](#) [TEKOÄLY](#)

YIT:llä rakennetaan jo ensimmäisiä tekoälyagenteja.



[Kokemukset jakoon.](#) YIT:n Visa Linkkiä haastateltiin Microsoftin AI Summit 2024 - tapahtuman yhteydessä, jossa hän kertoi yhtiön Copilot-käytöstä myös lavalla. MIA JÄRVISALO

AI Adoption in Finland

Tekoäly vapauttaa lisää aikaa hoivatyöhön – Attendo, Efima ja Microsoft kehittävät yhdessä uusia ratkaisuja

Tekoäly vapauttaa lisää aikaa hoivatyöhön – Attendo, Efima ja Microsoft kehittävät yhdessä uusia ratkaisuja

4.4.2024

Tampere haluaa tuoda tekoälyn yli 8000 työntekijänsä avuksi – ”Selaimessa toimiva Copilot on hyvä harjoitusvastus”

Suvi Korhonen 12.6.2024 06:05 | päivitetty 25.6.2024 11:12 [JULKISEN HALLINNON ICT](#) [TEKOÄLY](#) [DIGITALOUS](#)

Tampereen kaupunki tarjoaa työntekijöilleen kattavia koulutuksia tekoälyn perusteista.



[Ennusteita tekoälyllä.](#) Tampereen tietohallintojohtaja Maria Nikkilä kehuu kävijävirtoja ennustavaa Tampereen Pulssia. LAURA VESA

Boosting human potential with AI

How we make better and faster tenders for our customers with Gen AI

Ever been amazed at how fast a new building can shoot up these days? With customer expectations for faster delivery schedules intensifying, KONE's latest AI-powered tool offers a solution by finding tailored solutions for each new construction project quickly.

Published 26-06-2024

s a n o m a

KONSERNI

Keitä olemme Mitä t

← Siirry - Uutishuone

Tekoäly kertoo paikallissään

19.09.2024

Sanoma Media Finland

Lehdistötiedotteet

Microsoft datacenter – operational 2027

Land area

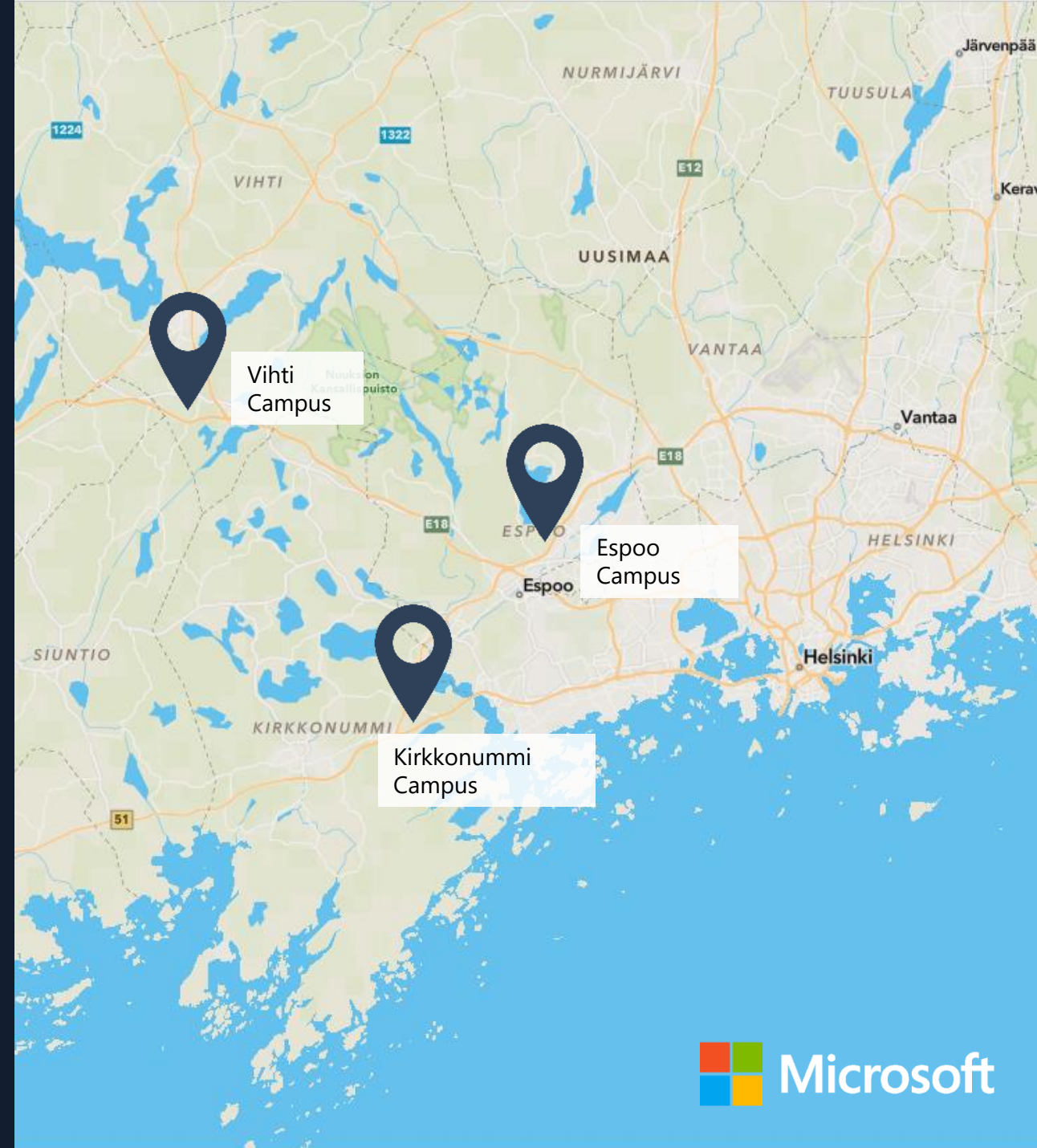
+ 1,400,000 sq m

Building right

+ 850,000 sq m

Location

Länsi-Uusimaa

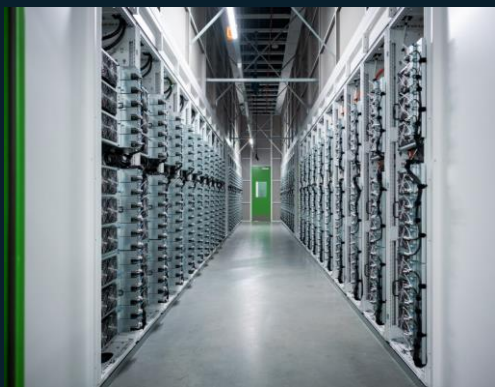


Microsoft datacenter impact in Finland



EMPLOYMENT

Direct: 4500
(construction) + 300 (DC
Ops)
Indirect: 11 000



ECONOMY

Microsoft invests 1€,
ecosystem generates 3€



GREEN TRANSITION

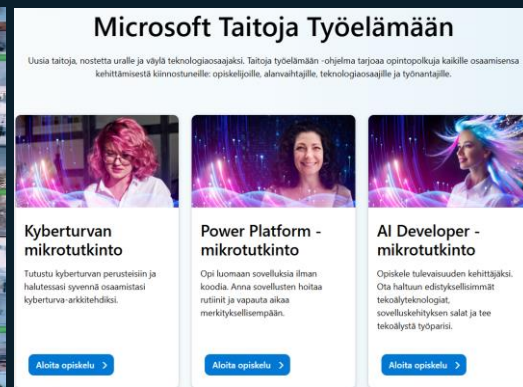
Microsoft invests into
additional clean energy
production with PPAs



INNOVATION

District heating
decarbonization for
250 000 residents

Producing 200 MWh heat



SKILLING

100 000 skilled with tech, target
300 000 in 5 years

Datacenter Academy with
vocational schools Omnia & Luksia



FDI learnings and asks

Best practices from Finland

- 1. Permitting:** Smooth and predictable permitting as clear competitive advantage (incl. Green transition project status)
- 2. Energy:** Proactive build-out of transmission grid, very customer-oriented TSO (Fingrid)
- 3. Supportive political environment:** A close and trusted collaboration with national, regional & local government
- 4. Taxation:** Maintain current datacenter energy taxation



How to attract FDI ?

Investments in new infrastructure will be evaluated from a **risk and timeline perspective**. It is crucial to have access to **buildable land with access to significant amounts of power capacity, within the timelines needed** to support customer demand.

More specifically, this requires

- Fast, efficient and predictable processes for **permitting** (zoning, environment, power)
 - Remove overlapping permitting from Finnish legislation to speed up the process
 - Synchronize relevant legislation in Finland to ensure predictability in permitting processes
- Fast and reliable **access to power grids**
- Baseload **power availability**
 - Support the expansion of nuclear power supply





Summary

How to enable growth in Finland?

Attracting investments

1. Remove overlapping permitting from Finnish legislation to speed up the process
2. Synchronize relevant legislation in Finland to ensure predictability in permitting processes
3. Energy:
 - i) WHR enabled DC's should be recognized as green investments throughout legislation
 - ii) Support the expansion of carbon free energy supply, including nuclear power
 - iii) Grid tariff reform: Support the market-based approach to grid tariffs → demand flexibility should not be a prerequisite for grid connection
 - iv) Maintain current DC energy taxation scheme
 - v) Continue to invest into transmission grid

Unlocking AI potential

1. Create an updated AI strategy for Finland with ambitious and clear goals for AI adoption across the public and private sector
2. Ensure coordination on AI Act implementation to provide clear implementation guidelines and guidance
3. Invest into skilling people on AI economy
4. Recognize international technology partnerships as growth driver for Finland



Thank you !

