

Intelligent Sea

Integrated digital services for efficient and safe maritime navigation

CEF Transport Action 2018-EU-TM-0051-S



MeriTaito



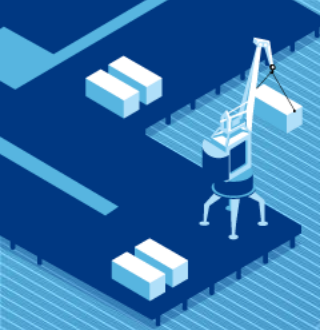
PORTS OF
STOCKHOLM



Co-financed by the Connecting Europe
Facility of the European Union

Stockholm

Naantali



Project information

- Timetable: 24.10.2018-31.12.2021
- Budget: EUR 3.1 M
- EU co-funding: EUR 1.5 M
- Project partners:
 - Meritaito (project coordinator)
 - Core maritime ports: Port of Naantali and Ports of Stockholm
- Associated partners (supporting partners without co-funding):
 - Swedish Maritime Administration
 - Finnish Transport Infrastructure Agency



Co-financed by the Connecting Europe
Facility of the European Union

Stockholm



Naantali



Sensor data: currents, weather data, conditions



PORT OF
NAANTALI
NAANTALIN SATAMA



PORTS OF
STOCKHOLM

Remote control and monitoring: Spatial data, Aids to navigation (ATON) luminosity control, battery status monitoring

5G communications network

Stockholm



Co-financed by the Connecting Europe
Facility of the European Union

Naantali

Bathymetric data

MeriTaito

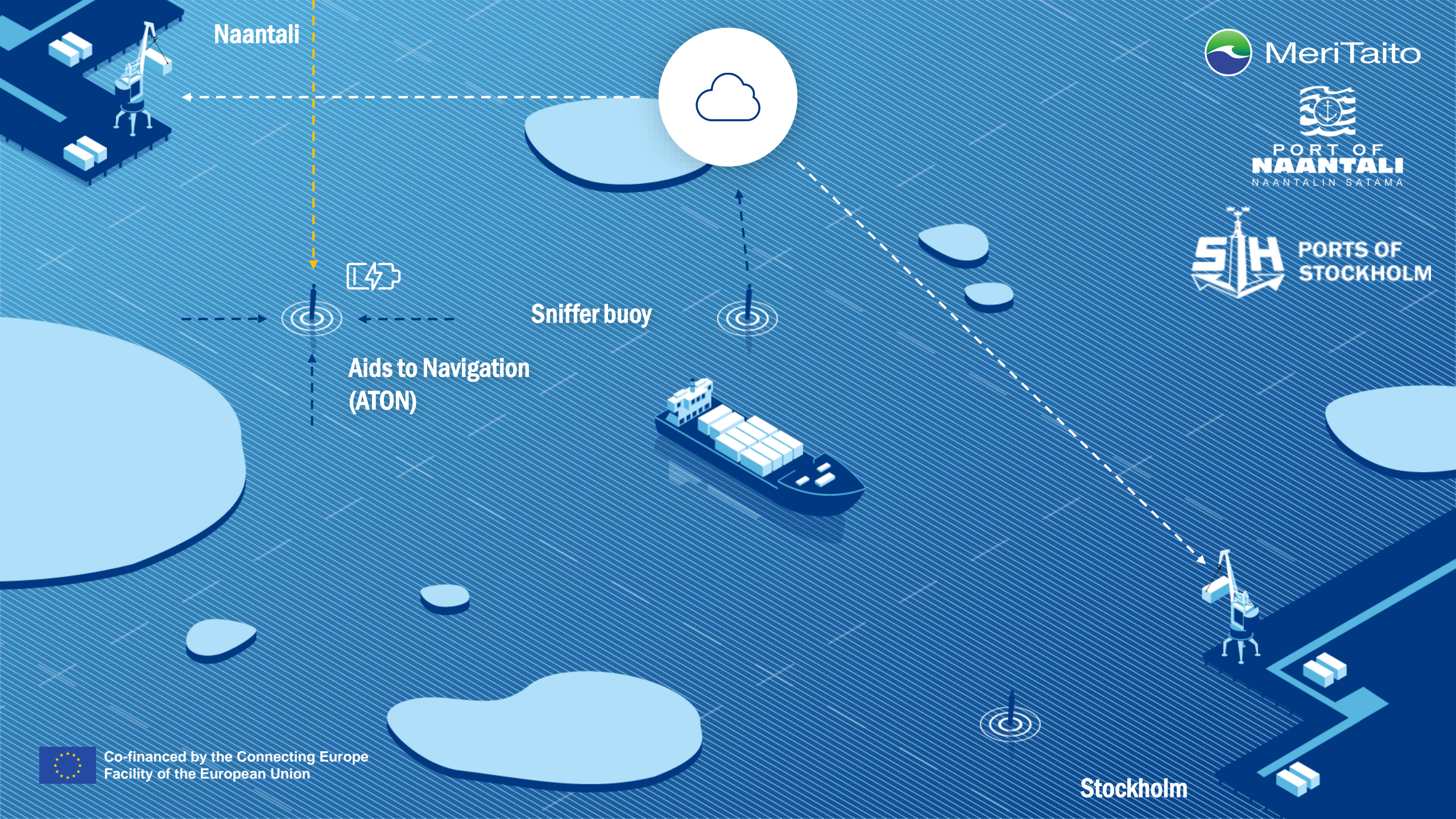
PORT OF
NAANTALI
NAANTALIN SATAMA

PORTS OF
STOCKHOLM

Stockholm



Co-financed by the Connecting Europe
Facility of the European Union



Naantali

 MeriTaito


PORT OF
NAANTALI
NAANTALIN SATAMA

 PORTS OF
STOCKHOLM

Sniffer buoy



Aids to Navigation
(ATON)

Stockholm



Co-financed by the Connecting Europe
Facility of the European Union

Naantali



Arrival at the port and docking



Stockholm



Co-financed by the Connecting Europe
Facility of the European Union



Ports of Stockholm

Nina Savijoki

Intelligent Sea – Project Manager

Tel. + 358 50 5965643

E-mail: nina.savijoki@meritaito.fi



Co-financed by the Connecting Europe
Facility of the European Union